



Webbs
Helping people move since 1994

Wolseley Road | Rugeley | WS15 2ET
Offers Over £600,000

 **Webbs**
estate agents

Summary

** DETACHED FAMILY HOME ** SOUGHT AFTER LOCATION ** CHANCEL CATCHMENT ** FIVE BEDROOMS ** MASTER SUITE WITH DRESSING ROOM & ENSUITE ** TWO RECEPTION ROOMS ** MODERN KITCHEN DINER ** UTILITY ROOM ** DOWNSTAIRS SHOWER ROOM ** CONSERVATORY ** LARGE PLOT ** WITHIN WALKING DISTANCE TO TOWN CENTRE & CANNOCK CHASE **

Webbs are pleased to market this extended detached home occupying a prime position on the ever-popular Wolseley Road in Rugeley, this impressive five-bedroom detached family home offers extensive and versatile living accommodation, ideal for modern family life. With generously proportioned interiors and a large rear garden, this property combines elegance, comfort and practicality in a highly sought-after location.

Wolseley Road is one of Rugeley's most sought-after residential streets, offering a peaceful setting within easy reach of schools, shops, parks and major commuter routes including the A51 and nearby rail links.

The internal accommodation briefly comprises, porch, entrance hallway, lounge, living/ dining room, conservatory, open plan kitchen, utility room, downstairs cloakroom, garage, five bedrooms, two ensuites and a family bathroom.

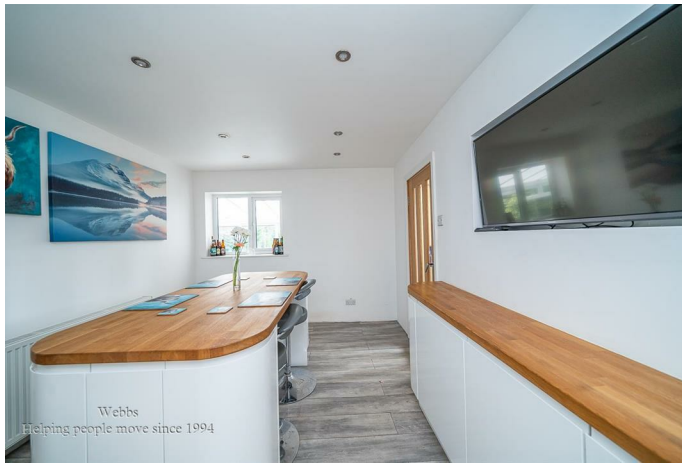
Key Features

- EXTENDED DETACHED HOME
- MASTER SUITE WITH DRESSING ROOM & ENSUITE
- OPEN PLAN KITCHEN DINER
- CONSERVATORY
- CLOSE TO AMENITIES
- FIVE BEDROOMS
- TWO RECEPTION ROOMS
- UTILITY ROOM
- LARGE PLOT
- VIEWING ESSENTIAL

Rooms and Dimensions

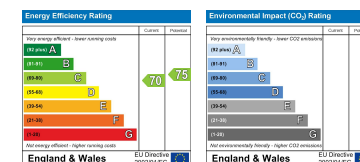
Porch	
Hallway	
Living Room	Ensuite
13'2 x 10'3 (4.01m x 3.12m)	3'3 x 9'3 (0.99m x 2.82m)
Living Room	Bedroom 2
10'9 x 23'6 (3.28m x 7.16m)	10'5 x 13'6 (3.18m x 4.11m)
Conservatory	Ensuite
17'2 x 10'3 (5.23m x 3.12m)	7'7 x 5'5 (2.31m x 1.65m)
Kitchen/ Diner	Bedroom 3
21'10 x 9'7 (6.65m x 2.92m)	13'11 x 10'2 (4.24m x 3.10m)
Utility Room	Bedroom 4
7'8 x 15'9 (2.34m x 4.80m)	7'7 x 16'10 (2.31m x 5.13m)
Bathroom	Office/ Bedroom 5
7'7 x 6'6 (2.31m x 1.98m)	5'4 x 11'9 (1.63m x 3.58m)
Bedroom 1	Bathroom
13'7 x 14'3 (4.14m x 4.34m)	12'4 x 9'8 (3.76m x 2.95m)
	Identification Checks (R)







Webbs Estate Agents - endeavour to maintain accurate depictions of properties in Virtual Tours, Floor Plans and descriptions, however, these are intended only as a guide and purchasers must satisfy themselves by personal inspection.



Globe House Upper Brook Street, Rugeley, Staffordshire, WS15 2DN

Tel: 01889 583377 | Email: rugeley@webbsea.co.uk | www.webbestateagents.co.uk